

Earring Sets



Earring Sets

Weight = Stone Wt. / Metal Wt.



ES96CDEN
Wt: 2.3 gm



ES97CDEN
Wt: 2.32 gm



ES101CDSL
Wt: 1.83 gm



ES108CDSL
Wt: 2.25 gm



ES285CDSL
Wt: 1.27 gm



ES299CDA18SL
Wt: 0.37/1.01 gm



ES310CDSL
Wt: 2 gm



ES312CDA18SL
Wt: 0.28/1.99 gm



ES313CDSL
Wt: 1.55 gm



ES336CDA18DC
Wt: 0.2/1.02 gm



ES337CDA18DC
Wt: 0.2/1.66 gm



ES338CDA18DC
Wt: 0.2/1.5 gm

Earring Sets

Weight = Stone Wt. / Metal Wt.



ES518CDRH
Wt: 1.2 gm



ES280CDSL
Wt: 2.9 gm



ES283CDA18SL
Wt: 0.19/1.24 gm



ES102CDSL
Wt: 2.07 gm



ES106CDSL
Wt: 1.65 gm



ES129CDA38MF
Wt: 0.26/1.89 gm



ES129CDA47MF
Wt: 0.26/2.23 gm



ES130CDA183T
Wt: 0.19/2.39 gm



ES130CDA473T
Wt: 0.19/2.39 gm



ES131CDA183T
Wt: 0.18/1.93 gm



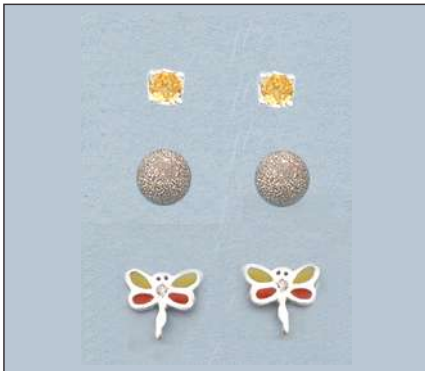
ES131CDA383T
Wt: 0.18/1.95 gm



ES132CDNP2T
Wt: 0.84/2.47 gm

Earring Sets

Weight = Stone Wt. / Metal Wt.



ES133CDM1MF
Wt: 0.12/2.21 gm



ES134CDM1MF
Wt: 0.12/1.75 gm



ES190CDA18SL
Wt: 0.22/1.10 gm



ES191CD3T
Wt: 1.6 gm



ES316CDA18SL
Wt: 0.2/1.4 gm



ES318CDA18SL
Wt: 0.3/1.2 gm



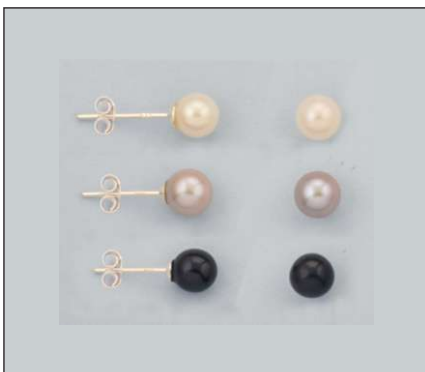
ES319CDA18SL
Wt: 0.2/1.52 gm



ES480CDA182T
Wt: 0.13/1.2 gm



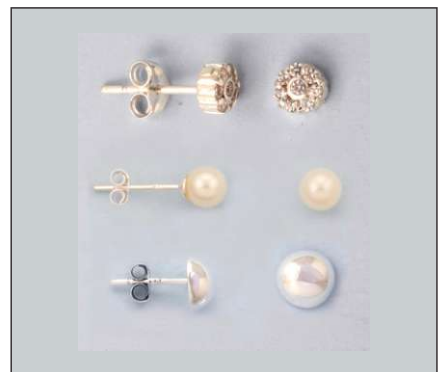
ES487CDM1SL
Wt: 0.36/1.32 gm



ES528CDM1SL
Wt: 2.31/0.99 gm



ES529CDM1SL
Wt: 1.5/1.92 gm



ES530CDNP2T
Wt: 0.85/2.65 gm

Earring Sets

Weight = Stone Wt. / Metal Wt.



ES535CDA18SL
Wt: 0.49/5.666 gm



ES537CD2T
Wt: 6.1 gm



ES542CDA182T
Wt: 0.07/3.53 gm



ES522CD2T
Wt: 0 gm



ES525CDSL
Wt: 2.8 gm



ES524CDSL
Wt: 2.54 gm



ES519CDA182T
Wt: 0.11/4.69 gm



ES520CDA182T
Wt: 0.64/5.56 gm



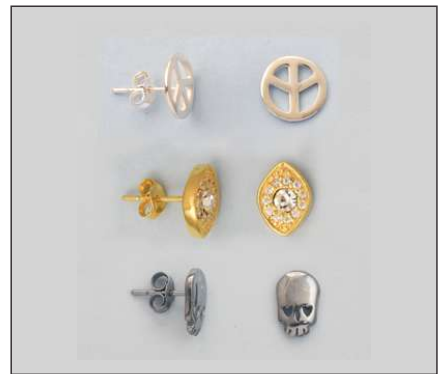
ES521CDA18FG
Wt: 0.15/4.7 gm



ES539CDA18FG
Wt: 0.05/5.8 gm



ES539CDA18FG
Wt: 0.01/3.14 gm



ES541CDM13T
Wt: 0.08/3.92 gm

Earring Sets

Weight = Stone Wt. / Metal Wt.



ES523CDA18FG
Wt: 0.35/5.95 gm



ES526CDFG
Wt: 2.92 gm



ES527CDA183T
Wt: 0.08/3.82 gm



ES531CDG183T
Wt: 0.03/3.72 gm



ES532CD3T
Wt: 3.25 gm



ES533CDA18FG
Wt: 0.61/2.94 gm



ES534CD3T
Wt: 5.09 gm



ES536CD2T
Wt: 2.9 gm



ES538CD2T
Wt: 2.42 gm